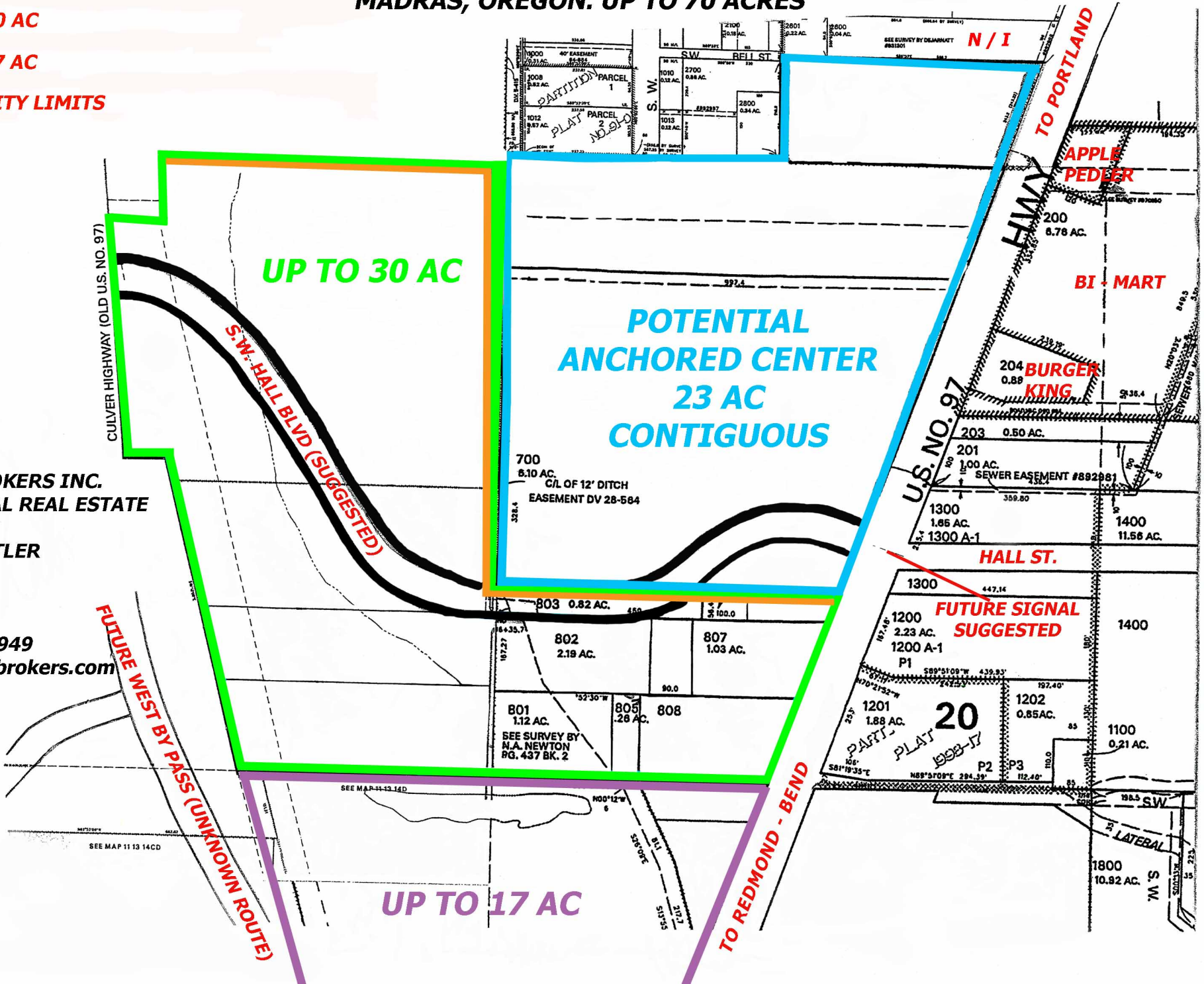


**"THE OLD STOCKYARDS"
DEVELOPMENT BOUNDARIES
MADRAS, OREGON. UP TO 70 ACRES**

- OLD MADRAS "STOCK YARDS"**
- 30 AC**
- 17 AC**
- CITY LIMITS**



**BUTLER BROKERS INC.
COMMERCIAL REAL ESTATE**

**ROBERT BUTLER
REALTOR**

**(503) 222-4949
www.butlerbrokers.com**

UP TO 17 AC

**POTENTIAL
ANCHORED CENTER
23 AC
CONTIGUOUS**

UP TO 30 AC

**FUTURE SIGNAL
SUGGESTED**

TO REDMOND - BEND

FUTURE WEST BY PASS (UNKNOWN ROUTE)

S.W. HALL BLVD (SUGGESTED)

TO PORTLAND

**APPLE
PEDEER**

BI - MART

**204 BURGER
KING**

U.S. NO. 97

HALL ST.

**PLAT 20
1998-17**

LATERAL

S.W.